



**SAMARA  
REGION**

# **7 BENEFITS FOR INVESTORS IN THE SAMARA REGION**



**2023**



WELCOME FROM THE GOVERNOR  
OF THE SAMARA REGION



Dear friends!

The Samara region is a dynamically developing, future-oriented region, favorable for the implementation of large-scale investment projects.

In recent years, the investment landscape of the region has changed dramatically, and a lot of work has been done to improve the conditions for doing business. Today, our region is in the top 10 of the national investment climate rating in Russia. At the end of 2021, the Samara Region became one of the leaders of the Volga Federal District in terms of investment dynamics – their growth over this period amounted to 22.5%. The past year was also a record year in terms of the number of new productions – despite the pandemic, 25 major projects were implemented in the Samara Region.

These results were made possible thanks to a multilevel system of state support for investments, which we have formed and continue to improve year by year. The institute of state supervision of investment projects has been created in the region, mechanisms for attracting investors and developing business are functioning effectively. Our territories with special tax regimes – SEZ «Togliatti», TASEDs in Togliatti and Chapaevsk, a network of industrial parks, a high-tech technopark – are considered among the most efficient in the country.

Today, when we are all learning to live and work in new conditions, it is especially important to support each investor, offer the most promising projects and ensure the most favorable treatment for their implementation.

I am sure that by implementing projects in our region, you will see a positive effect on your investments! I invite you to the Samara region!

Dmitry Azarov,  
Governor of the Samara Region

SAMARA REGION  
KEY FACTS & FIGURES

53,600 km<sup>2</sup>

AREA

3,1 mln.

POPULATION

\$ 44 bln.

INVESTMENTS IN THE REGION  
IN 2005–2021

TOP 10

IN THE GRP VOLUME  
IN THE COUNTRY

\$ 26,6 bln.

THE GRP VOLUME

122,5 %

INVESTMENT VOLUME IN 2021  
RELATIVE TO 2020

IN RUSSIA IN DEVELOPMENT  
OF PUBLIC-PRIVATE PARTNERSHIP

2 place

IN THE DYNAMICS OF INVESTMENTS  
IN THE COUNTRY

IN THE VOLGA FEDERAL DISTRICT  
IN THE NUMBER OF SMES

2 place

IN TERMS OF INVESTMENT DYNAMICS  
IN VOLGA FEDERAL DISTRICT



DIVERSIFIED ECONOMY

> 131 000

SME SUBJECTS

> 600

LARGE AND MEDIUM  
INDUSTRIAL  
ENTERPRISES

PARTICIPATION IN COOPERATION  
CHAINS

IMPLEMENTATION OF IMPORT  
REPLACEMENT STRATEGY

OPENING OF CONTRACTED  
MANUFACTURING FACILITIES



# BENEFITS

## FOR INVESTORS IN THE SAMARA REGION

1

### DIVERSIFIED AND INNOVATIVE ECONOMY

- Participation in the existing production chains.
- Joint development with international engineering centers.
- Availability of raw materials.

2

### A CENTER OF INDUSTRIAL AND CONSUMER MARKET

- High turnover of industrial enterprises.
- External economic relations.
- High volume of local markets.

3

### QUALIFIED WORKFORCE

- Scientific and educational centers.
- Higher education.
- Human resources.

4

### OPTIMAL LOGISTIC INFRASTRUCTURE

- Regional and federal highways.
- Railroad hub.
- Air and River Transport.

5

### AVAILABLE HIGHLY DEVELOPED INFRASTRUCTURE OF INVESTMENT SITES

- Developed investment sites.
- Affordable cost of doing business.
- Capacities of engineering infrastructure meeting investors' requirements.

6

### FAVORABLE INVESTMENT CLIMATE

- Positive dynamics in ratings.
- Holistic support.
- International and interregional business events.

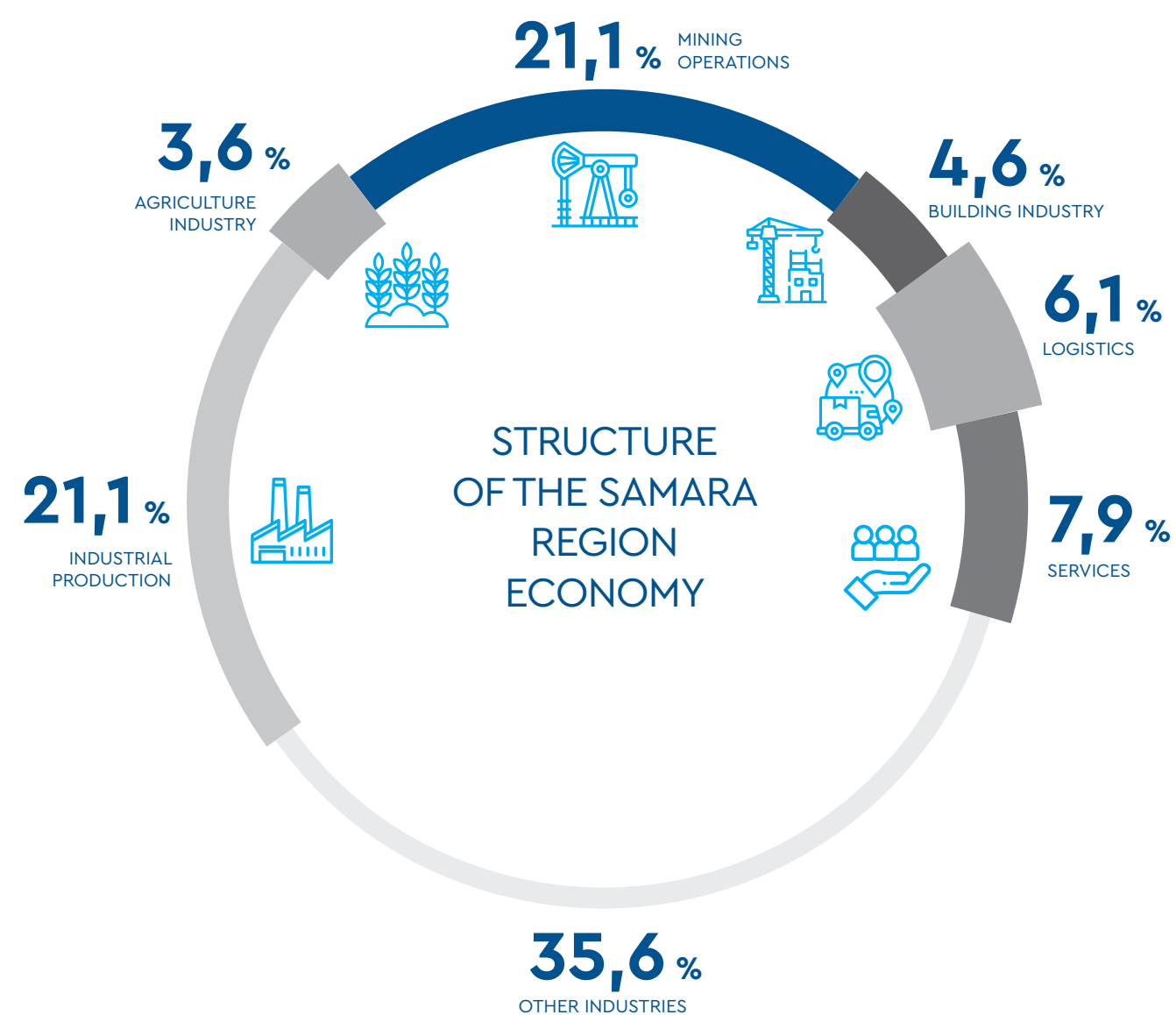
7

### HIGHLY DEVELOPED SOCIAL INFRASTRUCTURE

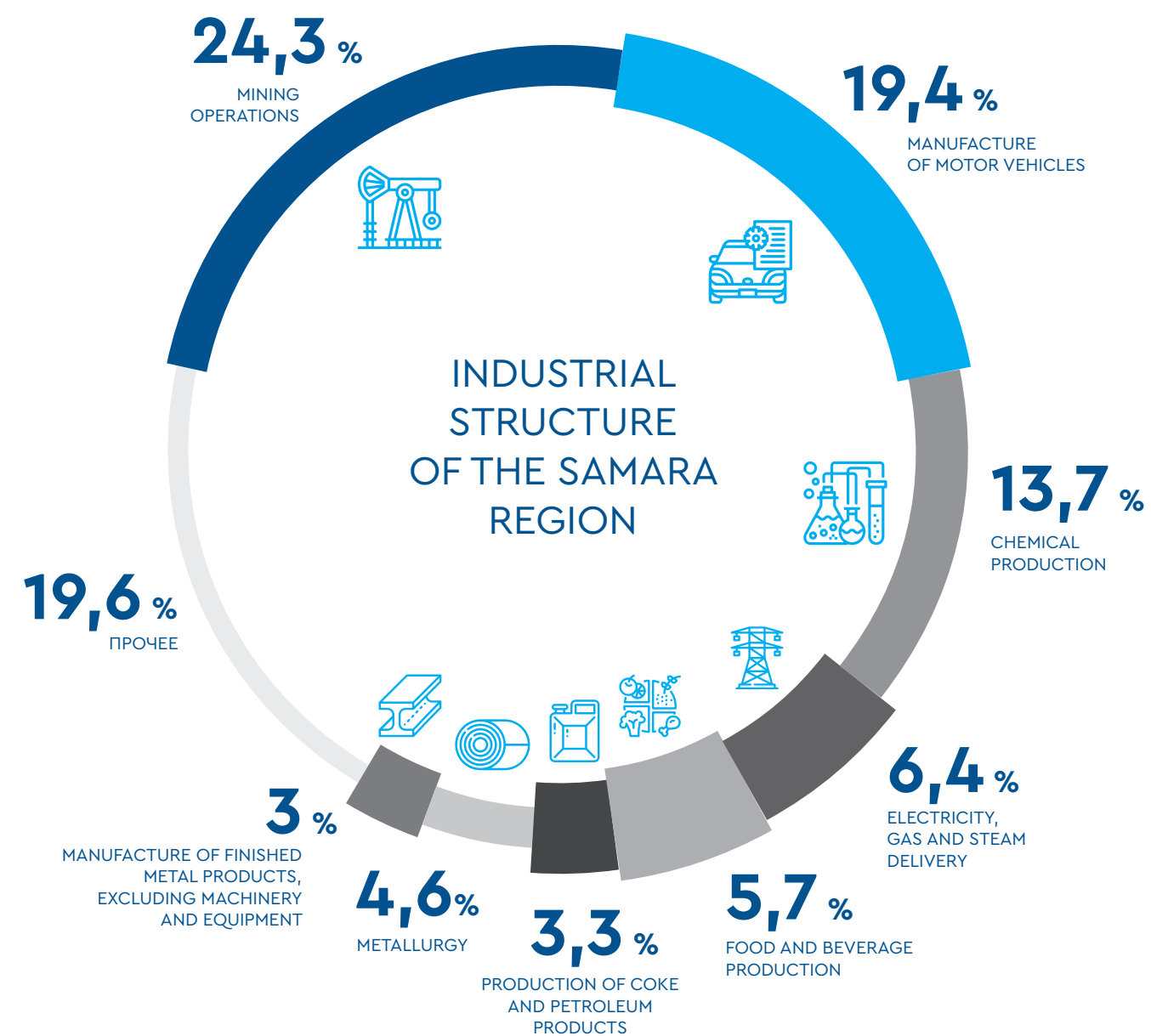
- Residential and office complexes of various categories.
- Modern medical centers and educational institutions.
- Variety of entertainment.



# DIVERSIFIED AND INNOVATIVE ECONOMY



THE BASIS FOR THE SAMARA REGION ECONOMY DEVELOPMENT IS  
HIGH-TECH PRODUCTIONS WITH HIGH ADDED VALUE



DIVERSIFICATION OF THE REGIONAL ECONOMY AND CLUSTER POLICY -  
AN OPPORTUNITY TO REALIZE YOUR INVESTMENT PROJECT

# KEY CLUSTERS

## AGRICULTURE



2,9  
mln. tons

GROSS CROP OF SUNFLOWER,  
GRAIN AND LEGUMS (2021)

## AUTOMOBILE INDUSTRY



60 %

OF TOTAL PRODUCTION OF AUTOMOTIVE  
COMPONENTS IN THE COUNTRY

1  
place

IN TERMS OF PASSENGER CARS PRODUCTION IN RUSSIA  
>20% OF TOTAL NEW PASSENGER AUTOMOBILES PRODUCTION IN RUSSIA

>200

ENTERPRISES OF THE INDUSTRY

## PETROCHEMICAL INDUSTRY



18,3 mln. tons

OIL REFINING VOLUME ANNUALLY

15,8 mln. tons

OIL PRODUCTION ANNUALLY

2  
place

IN THE VOLUME OF OIL REFINING IN THE COUNTRY

20 %

OF TOTAL AMMONIA PRODUCTION IN THE COUNTRY

## AEROSPACE INDUSTRY

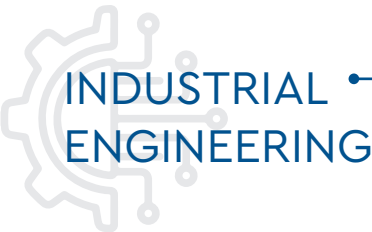


100 %

RUSSIAN MANNED  
SPACE MISSIONS

3  
place

IN TERMS OF TOTAL MANUFACTURING  
OF SPACE ROCKETS WORLDWIDE



## INDUSTRIAL ENGINEERING

### TECHNOPARK «ZHIGULI VALLEY»

- Application of IT technologies.
- Transport and space technologies.
- Chemistry and development of new materials.
- Information and telecommunication technologies.

### REGIONAL ENGINEERING CENTER

Promoting the technological readiness of  
entrepreneurship through the development (design) of  
technological and technical processes.

### VERTICALLY INTEGRATED CLUSTERS

- The medical cluster engages developments using 3D modeling technologies, brain-computer interfaces, and virtual reality technologies.
- Innovative Territorial Aerospace Cluster of the Samara Region.
- Automotive Cluster.

### SAMARA REGION CLUSTER ENGINEERING CENTER

- Development and production of unmanned aviation complexes at JSC RCC «Progress», LLC «Samara Engineering Laboratories», S.P. Korolev Samara National Research University.



# PROMISING INDUSTRIES AND VECTORS OF DEVELOPMENT

## AUTOMOBILE CLUSTER

- Embedding global players in cooperative chains.
- Development of high-tech automotive components production.



## PETROCHEMICAL CLUSTER

- Creation of new product segments with high added value.
- Development of «green chemistry».



## AEROSPACE CLUSTER

- Integration into global production chains of aircraft, launch vehicles, satellites and satellite electronics.
- Entering new segments (design, engineering).



## AGRI-FOOD CLUSTER

- Food provision of the region and export development.
- Development of selection and urbanized agricultural production.



## TRANSPORT AND LOGISTICS CLUSTER

- Development of multimodal transport and logistics services.
- Construction of new road bridges across the rivers of the region and the connecting infrastructure of the Samara-Togliatti agglomeration.
- Creation of a multimodal transport and logistics hub.



## TOURISM AND RECREATION CLUSTER

- Creation of a tourist and recreational cluster «Samarskaya Luka» with an area of 164,700 hectares, which will include the National Park «Samarskaya Luka» and the Zhigulevsky nature reserve.
- Creation of a tourist and recreational cluster «Event agglomeration».



## CONSTRUCTION CLUSTER

- Construction of residential real estate.
- Production of modern building materials using regional raw materials base.





# CENTER OF INDUSTRIAL AND CONSUMER MARKET

1 place

IN SIZE AMONG  
NON-CAPITAL CITY  
AGGLOMERATIONS

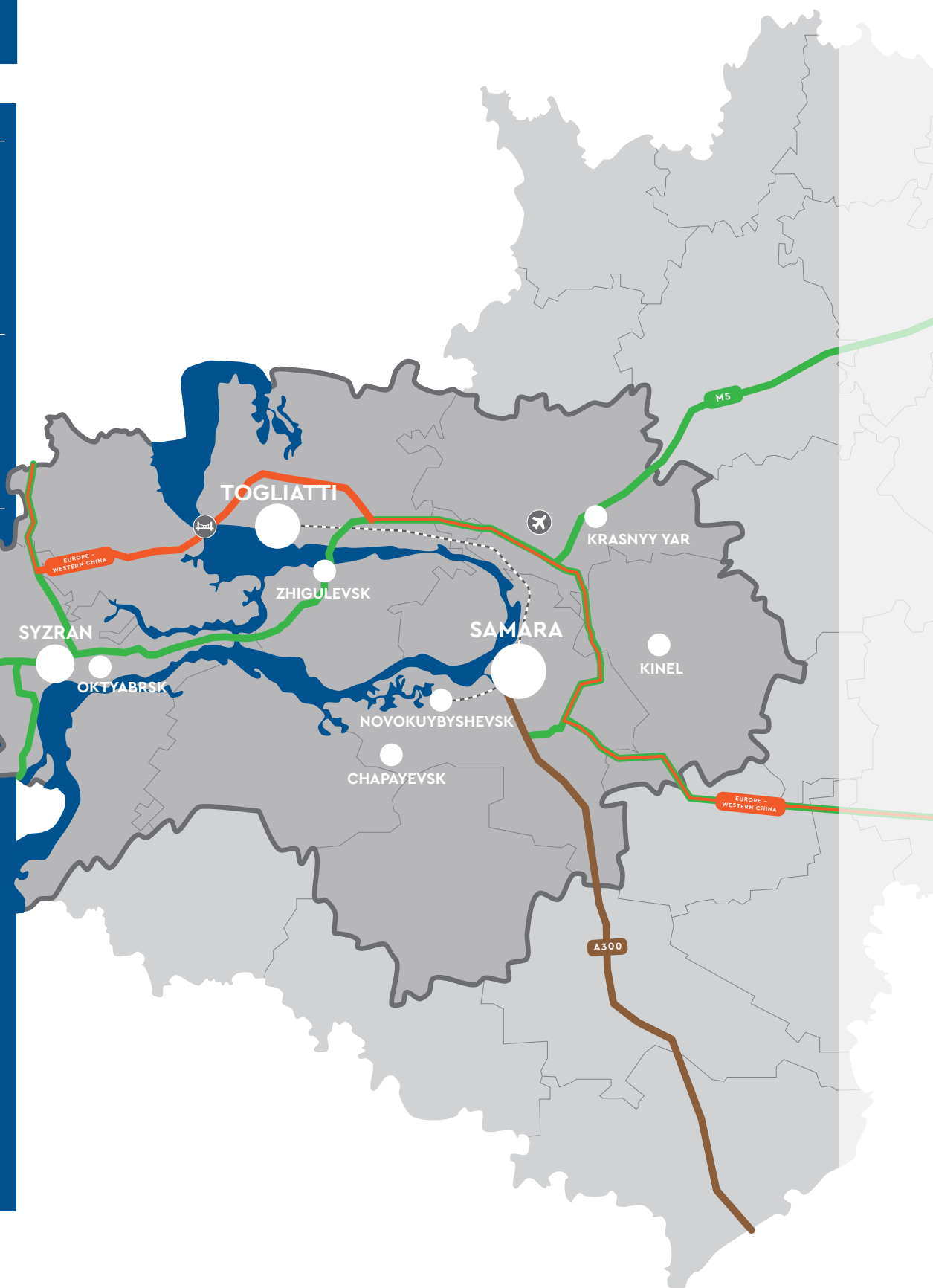
2,7

MILLION  
PEOPLE

2 cores

SAMARA –  
1 137 THOUSAND PEOPLE  
TOGLIATTI –  
686 THOUSAND PEOPLE

UNIQUE POLYCENTRIC  
AGGLOMERATION  
WHOSE BOTH CORES  
BELONG TO SOME OF  
THE LARGEST CITIES



INDUSTRIAL BACKBONE  
OF THE REGION



## EXTERNAL TRADE TURNOVER

EXTERNAL TRADE  
TURNOVER

8,1 billion

\$ USA

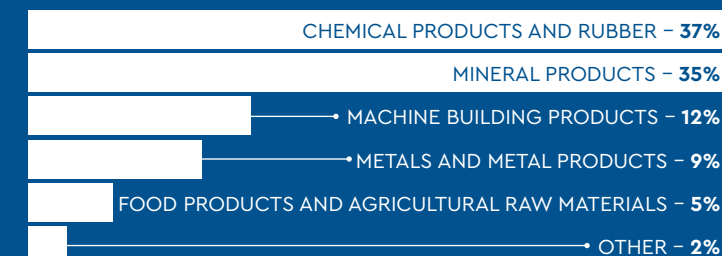
IMPORT

2,9 billion

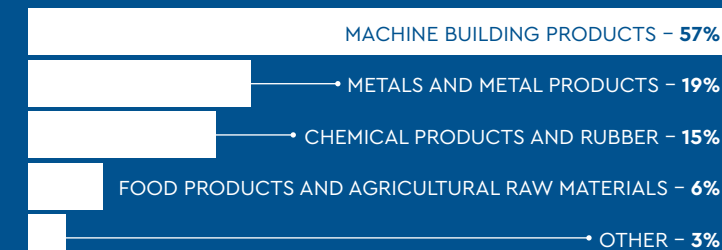
5,2 billion

EXPORT

### EXPORT STRUCTURE BY GOODS

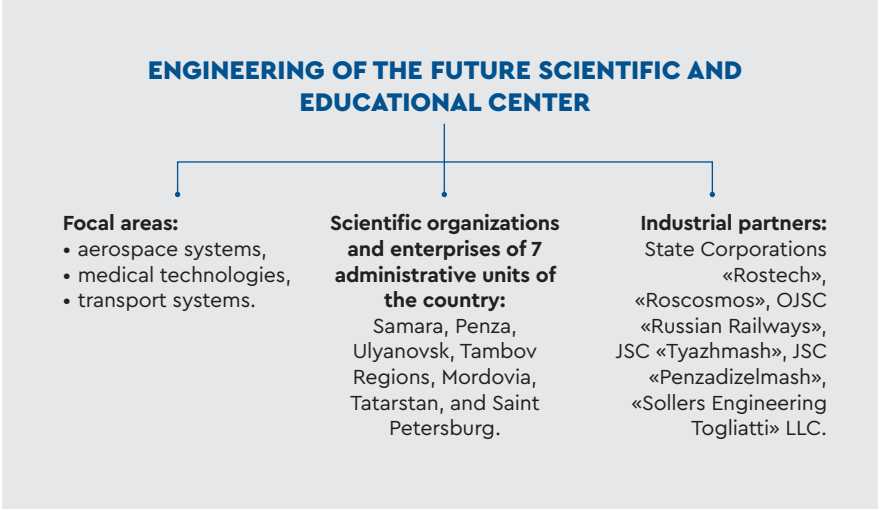


### IMPORT STRUCTURE BY GOODS





# QUALIFIED WORKFORCE



**S.P. KOROLEV SAMARA NATIONAL RESEARCH UNIVERSITY**

is one of 29 national research universities of the country. The scientific and research activities of Samara University span across aerospace technology, engine construction, modern information processing methods, photonics, material studies, as well as fundamental technical and experimental sciences.



**SAMARA STATE MEDICAL UNIVERSITY**

comprises 13 faculties and over 80 departments, own clinics for 1210 patients, 3 educational and 7 research institutions and a research laboratory, a dedicated medical library, 3 internet centers and over 20 multimedia and computer classrooms. In 2021, it has received the federal innovation platform status.



**SAMARA STATE TECHNICAL UNIVERSITY**

trains specialists for the energy, oil and gas production, chemical and petrochemical, machine building, transport, food and defense industries, for the IT, instrumental engineering, automation and control in technical systems, material studies and metallurgy, as well as for biotechnology and industrial environmental studies. In 2015, the University received the status of a Flagship university.



**TOGLIATTI STATE UNIVERSITY**

received the status of a flagship university in 2017, the development program being in progress until the year 2020. The innovative infrastructure of the university includes a Technology Transfer Center, Test Center and Innovation Technopark (created on the infrastructure of the TSU Innovation and Technology Center). Since 2013, TSU is the working base of the certified center «NANOCERTIFICA», a certifying agency for the nano-industry products.

**EDUCATION OF QUALIFIED PERSONNEL**

<b>379</b> Design, production and operation of rocket-space complexes	<b>339</b> Design of aircraft and rocket engines	<b>311</b> Aircraft and helicopter construction	<b>623</b> Mechanical engineering and power engineering
<b>3130</b> Medicine	<b>895</b> Dentistry	<b>429</b> Pharmacy	<b>379</b> Preventive medicine
<b>3722</b> Oil and gas business	<b>2466</b> Construction	<b>1113</b> Electricity and electrical engineering	<b>602</b> Heat power engineering and heat engineering
<b>1292</b> Construction	<b>928</b> Electricity and electrical engineering	<b>429</b> Mechanical engineering and power engineering	<b>314</b> Ground transport and technological means

24

HIGHER EDUCATIONAL INSTITUTIONS

19 tsd./per year

GRADUATE FROM HIGHER EDUCATIONAL INSTITUTIONS (INCLUDING TECHNICAL MAJORS)

72

INSTITUTIONS OF SECONDARY PROFESSIONAL TRAINING

12 tsd./per year

SPECIALISTS WITH SECONDARY TRAINING

1,7 mln. people

ECONOMICALLY ACTIVE POPULATION

61,2 %

RATE OF EMPLOYMENT

0,7 %

REGISTERED UNEMPLOYMENT RATE

40,4 %

RATIO OF HIGHLY QUALIFIED EMPLOYEES

\$ 560

AVERAGE MONTHLY SALARY



# 4

## OPTIMAL LOGISTIC INFRASTRUCTURE

### INTERNATIONAL TRANSPORT CORRIDOR «EUROPE – WESTERN CHINA» (ITC EWC)

A transcontinental project aiming to re-create the Silk Road that used to connect Europe and China for many centuries.

**Length** – 8500 km.

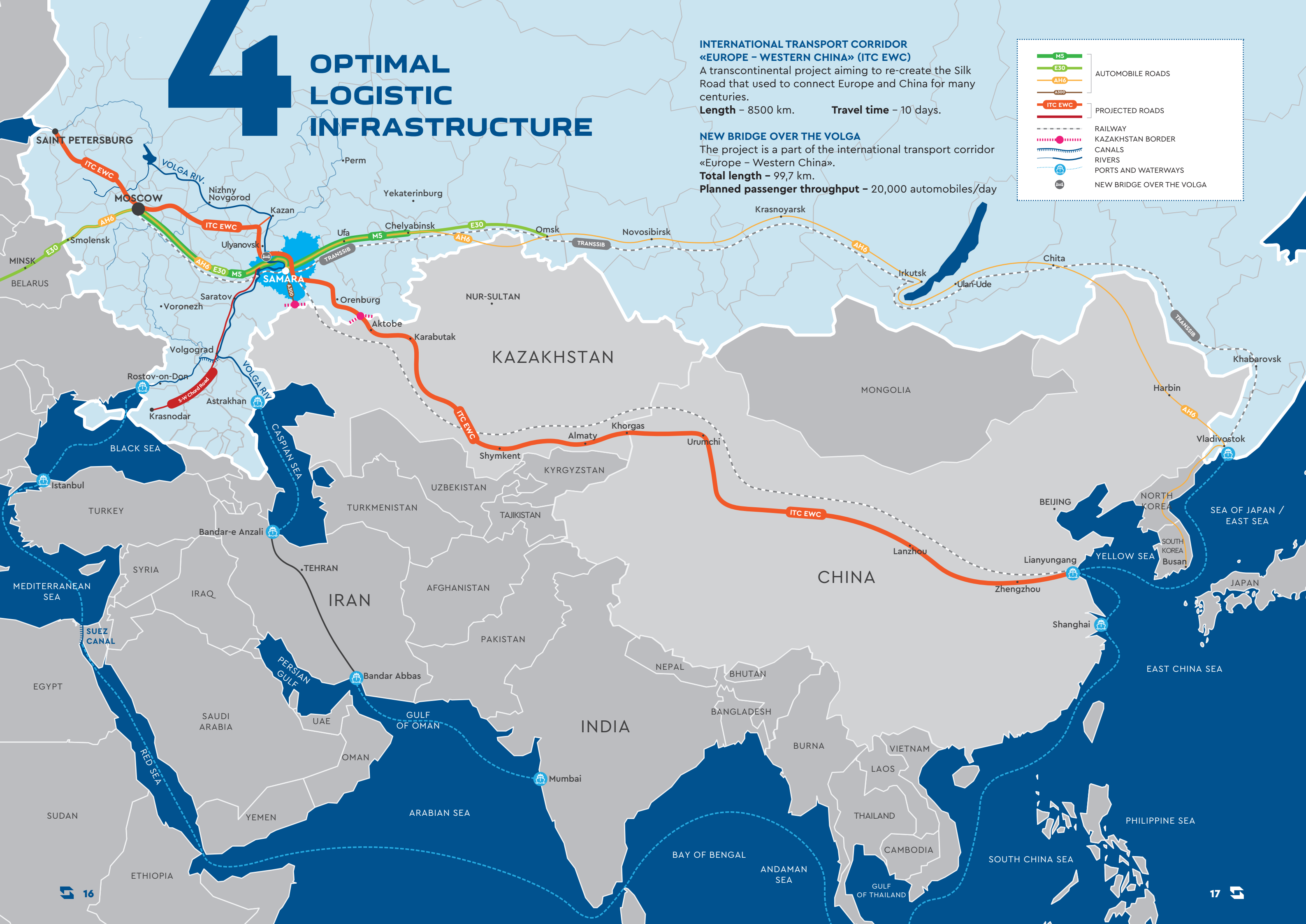
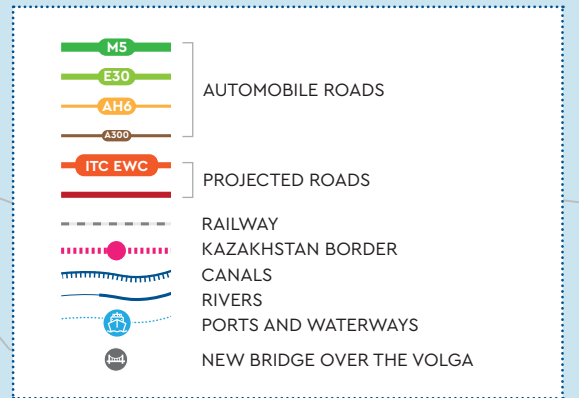
**Travel time** – 10 days.

### NEW BRIDGE OVER THE VOLGA

The project is a part of the international transport corridor «Europe – Western China».

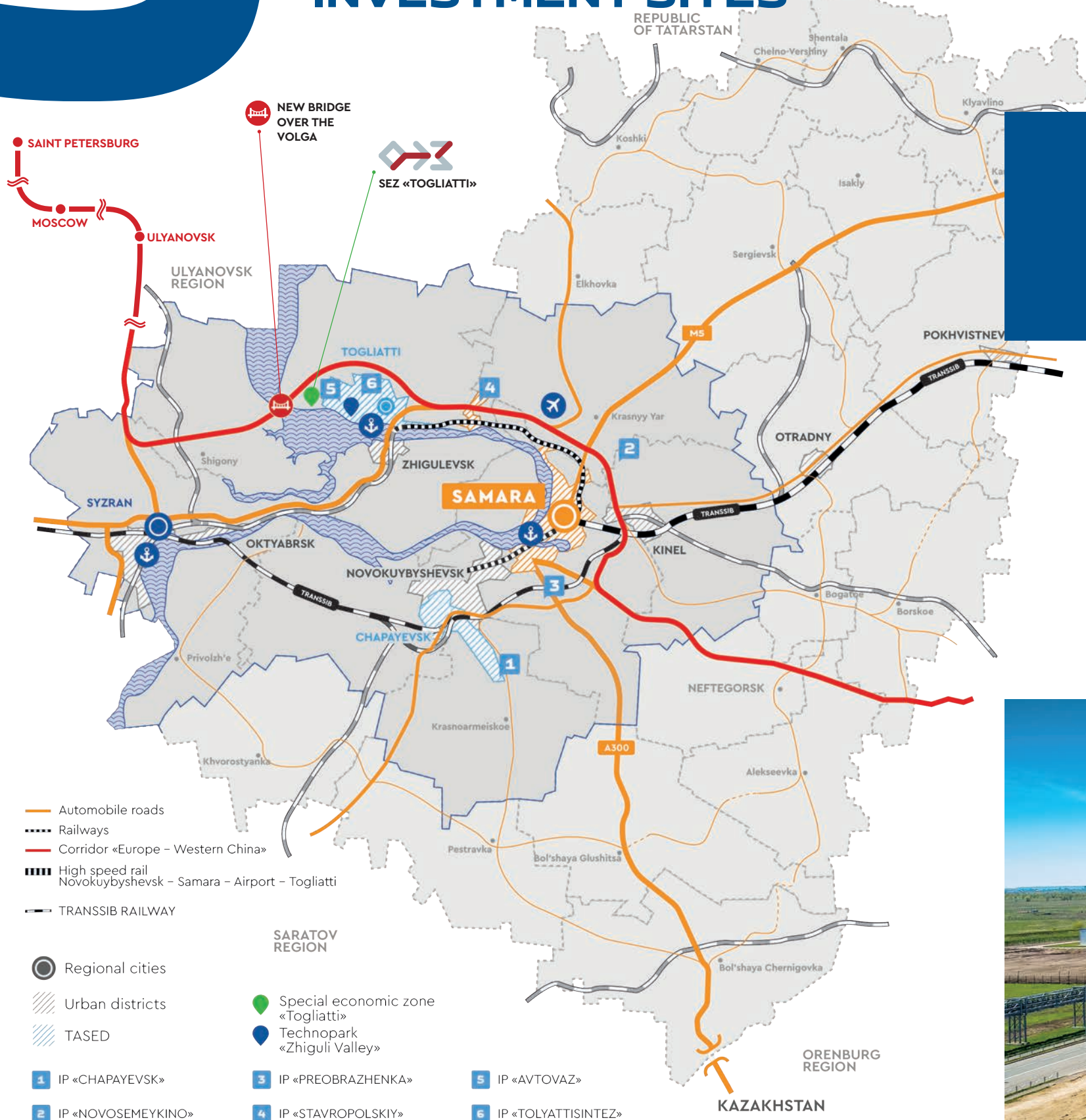
**Total length** – 99,7 km.

**Planned passenger throughput** – 20,000 automobiles/day





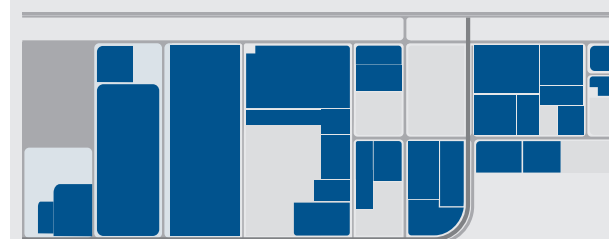
# AVAILABLE HIGHLY DEVELOPED INFRASTRUCTURE OF INVESTMENT SITES



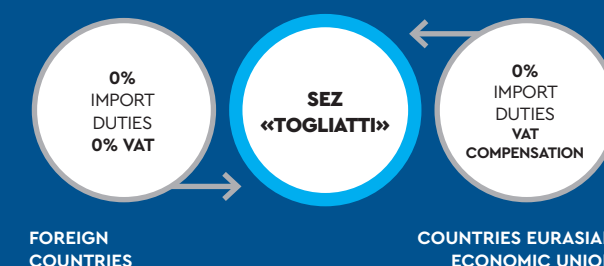
## SEZ «TOGLIATTI»

**Total area:** 660 ha  
**Area available for development:** 468,19 ha  
**Residents:** 31 residents  
 13 production sites  
 TOP-10 SEZ in terms of investment attractiveness in the Russian Federation

\*according to the results of the V National rating of investment attractiveness of special economic zones



EXEMPTION FROM DUTIES ON IMPORT OF EQUIPMENT, RAW MATERIALS AND COMPONENTS TO THE TERRITORY OF SEZ



EXEMPTION FROM DUTIES ON EXPORT OF FINISHED GOODS OUTSIDE OF THE EEU



## ENGINEERING INFRASTRUCTURE AND OPERATIONAL COSTS

ITEM	CAPACITY	COST
Land rent in the SEZ	468,19 ha	from \$195/ha per year
Land price in the SEZ		from \$975 /ha
Gas supply	250 000 m³/hour	\$0,07 /m³
Electricity	180 MW	\$0,05 /kWh
Technical and potable water supply	7 300 m³/day	\$0,07 /m³
Drainage of technical and domestic water	7 300 m³/day	\$0,14 /m³

## TAX BENEFITS

PROFIT TAX	PROPERTY TAX	LAND TAX	TRANSPORT TAX
2% 5 years	0% for 10 years	0% for 5 years	0% for 10 years
7% 6–10 years			
15,5% after 10 years			





TERRITORY OF ADVANCED SOCIAL AND ECONOMIC DEVELOPMENT  
«TOGLIATTI»



64

RESIDENTS

> \$ 378 mln.

TOTAL INVESTMENT FOR PROJECT

> 11,000

NUMBER OF JOBS

CAPITAL INVESTMENT IN THE PROJECT:

≥ \$ 266K

≥ \$ 66K

DURING THE FIRST YEAR



TERRITORY OF ADVANCED SOCIAL AND ECONOMIC DEVELOPMENT  
«CHAPAEVSK»



21

RESIDENTS

> \$ 185 mln.

TOTAL INVESTMENT FOR PROJECT

> 4 500

NUMBER OF JOBS

CAPITAL INVESTMENT IN THE PROJECT:

≥ \$ 43K



TAX PRIVILEGES FOR RESIDENTS OF «TOGLIATTI» TASED

TAX BENEFITS

Profit tax	2%	5 years	12%	6–10 years
Property tax	0%	for 10 years		
Land tax	0%	for 10 years		
Insurance payments	7,6%*	for 10 years		

\* for residents which received the status before 28.09.2019

CREATION OF NEW JOBS WITHIN THE FIRST YEAR:



≥20 for new organizations



≥20 for new organizations (not less than average number of employees for the past 3 years)

TAX PRIVILEGES FOR RESIDENTS OF «CHAPAEVSK» TASED

TAX BENEFITS

Profit tax	2%	5 years	12%	6–10 years
Property tax	0%	for 10 years		
Land tax	0%	for 10 years		
Insurance payments	7,6%*	for 10 years		

\* for residents which received the status before 12.02.2022

CREATION OF NEW JOBS WITHIN THE FIRST YEAR:



≥10 for new organizations



≥10 for new organizations (not less than average number of employees for the past 3 years)



# STATE INDUSTRIAL PARKS

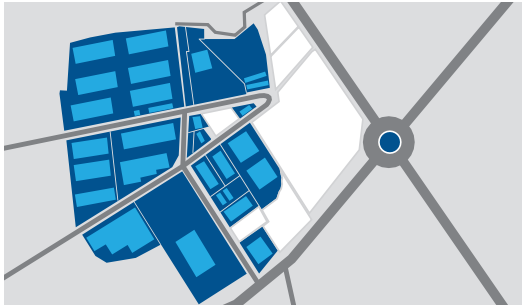
## «PREOBRAZHENKA», «PREOBRAZHENKA-2» INDUSTRIAL PARK

415,1 ha

TOTAL AREA

264 ha

VACANT AREA



- Located at the intersection of regional routes A300 and P226.
- Well-developed engineering infrastructure.
- In the immediate vicinity of a Yuzhny Gorod residential complex.
- Well-developed engineering infrastructure.
- Support from the regional government.



## «CHAPAEVSK» INDUSTRIAL PARK

192,9 ha

TOTAL AREA

111,9 ha

VACANT AREA



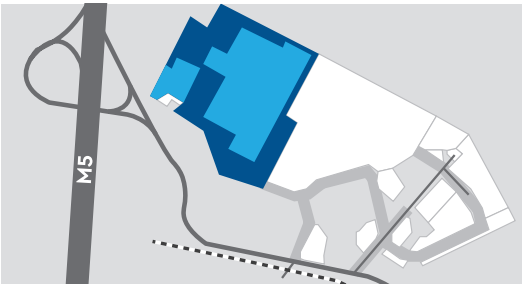
- Located at the territory of Chapaevsk TASED.
- Construction of a railway with its own branch to the city station is provided.
- Ready engineering infrastructure.
- Support from the regional government.
- Ready logistics infrastructure.



## «NOVOSEMEYKINO» INDUSTRIAL PARK

41,4 ha

TOTAL AREA



- Located near the intersection of the M5 and Starosemeykino highways.
- Ready engineering infrastructure.
- Well-developed transport infrastructure.



## TECHNOLOGY PARK «ZHIGULI VALLEY»

TOP 10

RUSSIAN INNOVATIVE SITES ACCORDING TO THE RESULTS OF THE VII NATIONAL RATING OF TECHNOPARKS IN RUSSIA (2021)

### UNIQUE ENVIRONMENT

FOR THE DEVELOPMENT OF HIGH-TECH COMPANIES AND INNOVATIVE PROJECTS

FUND

«SKOLKOVO»

REGIONAL OPERATOR OF THE «SKOLKOVO» FOUNDATION

More than  
2000

WORK PLACES

More than  
260

RESIDENTS

\$ 4,3 /m²

PER MONTH OFFICE SPACE RENT

65K m²

TOTAL AREA OF TECHNOPARK FACILITIES

EDUCATION OVER

800 CHILDREN

IN FIVE AREAS: IT-QUANTUM, ROBOQUANTUM, NANOQUANTUM, AUTOQUANTUM AND INDUSTRIAL DESIGN





PRIVATE INDUSTRIAL PARKS

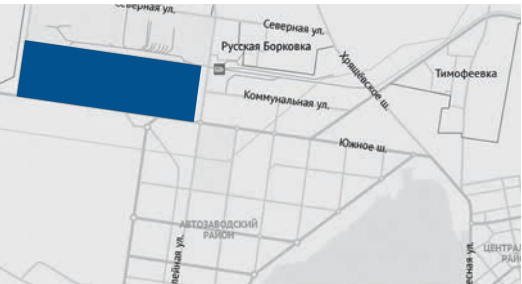
PJSC «AVTOVAZ» INDUSTRIAL PARK

60 000 m²

FREE PRODUCTION  
AND OFFICE SPACE

- Availability of equipment and industrial services.
- Possibility to utilize infrastructure of Autovaz.
- Well-developed engineering infrastructure.
- Possibility to utilize TASED benefits.
- Well-developed logistic infrastructure.
- Support from the regional government.

ANCHOR RESIDENT



«TOGLIATTISYNTEZ» INDUSTRIAL PARK

400 ha

TOTAL AREA

- Free connection to energy sources.
- Support from the regional government.
- Ready engineering infrastructure.
- Environmental monitoring.
- Ready logistics infrastructure.
- Possibility to utilize TASED benefits.

ANCHOR RESIDENT



LAND PLOTS  
FOR RESIDENTS

28,37 ha

107 000 m²

PRODUCTION, STORAGE  
AND OFFICE SPACE



«STAVROPOLSKIY» INDUSTRIAL PARK

118 ha

TOTAL AREA

- Ready logistics infrastructure.
- Developed infrastructure and its integrated development according to the needs of residents.
- Support from the regional government.

ANCHOR RESIDENT



68,2 ha

VACANT AREA



TAX PRIVILEGES FOR INVESTORS

Support measures	Standard conditions	Territory of the Samara Region	Mono-industry town <sup>1,2</sup>	Territories of advanced development «Togliatti», «Chapaevsk»	Special Economic Zone «Togliatti»
Property tax	2,2%	0% from 2 to 5 years	0% from 4 to 7 years	0% for 10 years	0% for 10 years
Income tax	20%	16,5% – from 4 to 5 years <sup>4</sup> 10% – upon inclusion in the register of participants in regional investment projects	16,5% from 6 to 7 years <sup>4</sup>	from the moment of profit 2% – in the first 5 years 12% – in the next 5 years	from the moment of profit 2% – for 5 years 7% – in the next 5 years 15,5% – until 2059
Transport tax		depends on the type of vehicle			0% for 10 years
Land tax		depends on the category of land		0% for 10 years	0% for 5 years
Insurance payments	30%	30%	30%	7,6% <sup>3</sup> for 10 years	30%
Customs duties		depends on the declared object			It is possible to apply the customs procedure of a free customs zone

<sup>1</sup> Subsidy of 100 000 RUB is granted for each new job created in a mono-industry town of regional significance.  
<sup>2</sup> Subsidy for payment of loan interest for the implementation of investment projects from 30 million rubles up to 4 billion rubles (2/3 of the cost of loan interest) (depending on the type of economic activity).  
<sup>3</sup> For investors who received resident status in the first three years of the TASED operation.  
<sup>4</sup> Till 01.01.2024.





## FAVORABLE INVESTMENT ENVIRONMENT

АКРА  
AA(RU) Stable  
01.04.2022



TOP 10  
2022

TOP 10

SEZ «TOGLIATTI» – HIGH INVESTMENT ATTRACTIVENESS (AMONG INDUSTRIAL-PRODUCTION TYPE SEZS) ACCORDING TO THE RESULTS OF THE V NATIONAL RATING OF INVESTMENT ATTRACTIVENESS, 2021

TOP 10

TECHNOPARK IN THE SPHERE OF HIGH TECHNOLOGIES «ZHIGULI VALLEY» WAS AWARDED THE «HIGHEST LEVEL OF EFFICIENCY OF THE FUNCTIONING OF THE TECHNOPARK» – 1 GROUP (A1+) ACCORDING TO THE RESULTS OF THE VII NATIONAL RATING OF TECHNOPARKS OF RUSSIA, 2021

## VIBRANT BUSINESS LIFE



- Volga investment summit.
- Annual investors' summit «Volga Angels».
- Annual engineering conference in the Samara Region.
- Annual meetings with international associations.
- Regional forum of entrepreneurs «Line of Success».

## PARTICIPATION IN INTERNATIONAL CONFERENCES

Saint-Petersburg  
International Economic  
Forum, 2021



«Days of the Franco-Russian  
Chamber of Commerce  
and Industry in the Samara  
Region» Forum – 2021



## SUCCESS STORIES



## HOLISTIC SUPPORT



### ONE-STOP SHOP PRINCIPLE



Investment Promotion Agency  
of the Samara Region

[www.investinsamara.ru](http://www.investinsamara.ru)

- Federal executive authorities and development foundations
- Regional executive authorities
- Local self-government authorities
- Administration of SEZ, PSEDA, and industrial parks of the region
- Associations, Chambers of Commerce, Trade missions
- Development institutions and financing organizations, if required (ВЭБ.РФ, RDIF)



## HIGHLY DEVELOPED SOCIAL INFRASTRUCTURE



### COMFORTABLE LIVING

The region offers a large number of residential estates with a developed engineering, social infrastructure and carefully landscaped surroundings. The hospitality business is represented by such international brands as LOTTE, Holiday Inn, Hilton, Ibis, Renaissance.

### EDUCATIONAL POTENTIAL

Universities: 24. Schools: 698 including gymnasias and lyceums with in-depth teaching of specific subjects  
Kindergartens: 322. The Samara Region is one of the founders of the WorldSkills movement in Russia.

24

UNIVERSITIES

698

SCHOOLS

322

KINDERGARTENS



## LARGEST SPECIALIZED MEDICAL CENTERS

«Mother and Child» clinic is the leader of Russian private medical services market. The Samara Oncology Clinical Hospital assists over 4,000 patients from other states and regions of Russia every year. The T.I. Eroshevsky Ophthalmology Clinical Hospital is one of the best-equipped ophthalmology centers of Russia.



## ENTERTAINMENT AND FUN

Samara Region is the home of 34 museums and 16 theatres including the theatre «Gran'» whose performances received the «Golden Mask» award, and the M.Gorky Academic Drama Theatre, one of the oldest drama theatres in the country. The region is a leader among cities of Russia in terms of event-driven tourism (festivals «Rock over the Volga», «VolgaFest» «Valery Grushin Songwriters' Festival»).

«URBAN RESORT» IS THE TITLE THAT THE CITIZENS OF SAMARA USE WITH AFFECTION. THE 'RESORT' AREA STRETCHES FOR ALMOST 5 KILOMETERS FROM THE HISTORICAL TO THE MODERN PART OF THE CITY. THE EMBANKMENT SHOWCASES UNIQUE ART OBJECTS AND ARCHITECTURAL COMPOSITIONS.

## INTERNATIONAL EVENTS

In 2018, the Solidarity Arena hosted 6 matches of the FIFA World Cup, including the 1/8 and ¼ finals. During the 2018 World Cup Samara region was visited by more than 600 thousand foreign tourists from 140 countries. In 2019, the Finals of the Russian Football Cup was held. In 2022, the stadium hosted the opening ceremony of the 30th «Student's spring» festival, which gathered about 45,000 spectators, which was a record attendance. The region is actively developing and hosting competitions in cycling, rowing, kitesurfing and snowkiting.



## UNIQUE NATURAL AND CULTURAL HERITAGE

The region is proud of the Middle Volga Biosphere Preserve created under the auspices of UNESCO on the territory of the Zhiguli State Natural Preserve and «Samarskaya Luka» National Park. The Buzuluk pine forest is a unique forest located on the border of two climate zones, steppe forest and forest. Eco-tourism is highly developed in Samara.



# CONTACTS



**DMITRY AZAROV**

Governor of the Samara Region

+7-846-332-22-68  
gubernator@samregion.ru



**DMITRY BOGDANOV**

Minister of Economic Development and Investments  
of the Samara Region

+7-846-332-27-44  
BogdanovDY@economy.samregion.ru



**ELENA POZHARNOVA**

Executive director of the Investment Promotion Agency  
of the Samara Region

+7-846-375-03-05  
PozharovaEY@investinsamara.ru







[investinsamara.ru](https://investinsamara.ru)

